

- 24 inches FHD.
- Wide viewing angle and high brightness.
- Integrated Quad Core ARM CPU.
- Optional touch panel.
- Fully configurable manual and automatic dimmer.
- Slim frame and reduced depth.
- Wide power supply options available.
- Extended range operating temperature.
- LED backlight lifetime min. 50.000h.

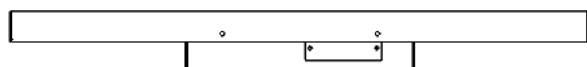
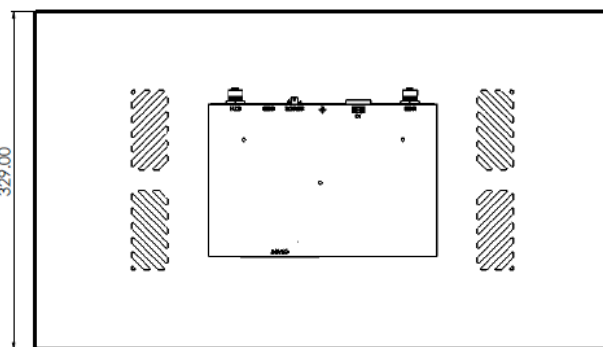
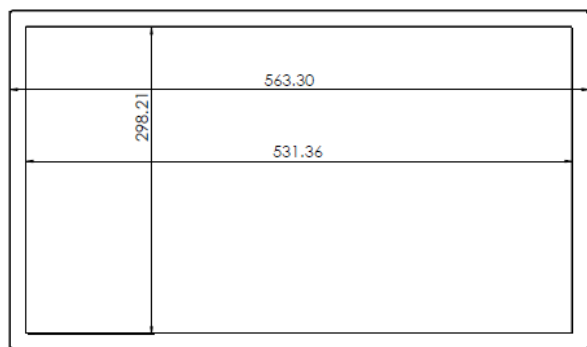
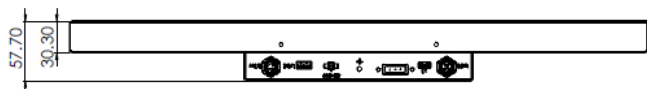


General Specification	
Size	24 inches
Resolution / Aspect	1920 x 1080px / 16:9
Inputs	Ethernet / WiFi
Audio	Optional Audio Output
Touch	Resistive 5 Wires / Projected Capacitive
Power Supply	9-36V DC / 43-160VDC / 14-160VDC
Power Consumption	18W (300 nits) / 27W (750 nits)
MTBF / Lifespan	Controller and LCD: 100.000h Backlight: min. 50.000h
Warranty	24 months
Certification	CE
Mounting Type	Stand Alone, rear custom fixtures
Mechanical and Environment	
Dimension	563.3 x 329 x 57.7mm (30.3mm) (see drawing for details)
Weight	2Kg
Enclosure	Steel and Aluminum, Powder Paint
Operation Temp.	0°C to 50°C
Storage Temp.	-20°C to 70°C
Vibrations / Shock	1G 2-500Hz / 10G 11ms
Optical Specification	
Brightness	300/750 nits, LED backlight.
Dimmer	Fully configurable Dimmer with Internal Sensor (included) and External Sensor (optional)
Contrast ratio	1000:1
Viewing Angle	170° H, 160° V
Response Time	16 ms
Optical Finish	Anti-glare/Anti-reflective
Enhancements	Sunlight Readable and Transfletive Enhancements Available

Inelmatic Electronics Service Centers
 Europe: Valladolid (Spain)
 Asia: Shanghai (China),
 Americas: Florida (USA), Ontario (Canada),
 Australia: Perth & Melbourne (Australia)

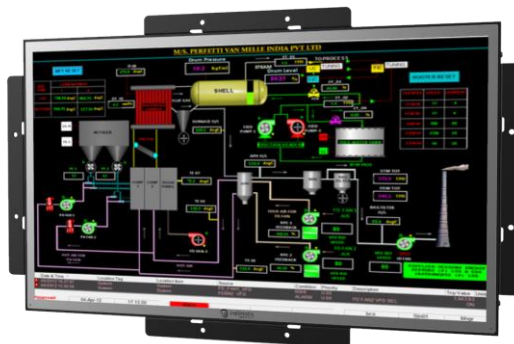
CPU Specification	
Cores	Quad-core ARM Cortex-A17
Frequency	1.8GHz
DDR	Upto 4G DDR4
Graphics	Mali-T760 MP4 GPU
Storage	Internal 8 to 16G eMMC , external TF/SD
Watchdog	Configurable watchdog
I/O	
Ethernet	1 x Base10/100, optional Gigabit, M12 Connector D Coded
USB	USB 2.0 x 1 Type A
Ignition	Integrated digital input for IGN control
RS232/485	RS232 / RS485 Port (M12 Connector)
Digital I/O	8 Input or 4 in 4 Out optional
Video	Optional DVI / HDMI Output
Audio	Optional Line In / Line Out

Drawing



Inelmatic Electronics Service Centers
 Europe: Valladolid (Spain)
 Asia: Shanghai (China),
 Americas: Florida (USA), Ontario (Canada),
 Australia: Perth & Melbourne (Australia)

Images



Ordering Information						
Model	Resolution	RAM/Flash	Brightness	Power Supply.	Angle	Operation Temp.
EDF2400-3388-208-0W0-2ND2-1	1920x1080px	2G / 8G	300nits	9-36VDC	170H/160V	0°C to 50°C
Accessories						
EDF001-L	Fixing accessory (L shape) for rear panel mounting					

Inelmatic Electronics Service Centers
 Europe: Valladolid (Spain)
 Asia: Shanghai (China),
 Americas: Florida (USA), Ontario (Canada),
 Australia: Perth & Melbourne (Australia)