

- 21.5 inches FHD.
- Wide viewing angle and high brightness.
- Integrated Quad Core ARM CPU.
- Optional touch panel.
- Fully configurable manual and automatic dimmer.
- Slim frame and reduced depth.
- Wide power supply options available.
- Extended range operating temperature.
- LED backlight lifetime min. 50.000h.

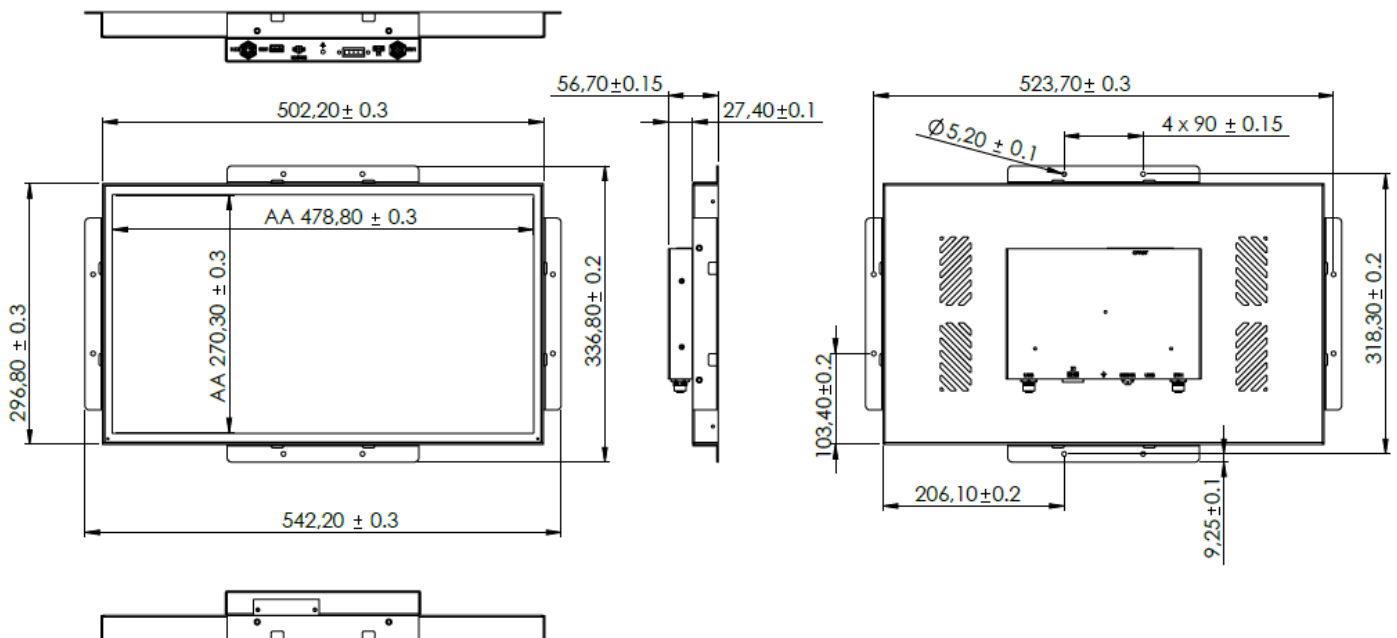


General Specification	
Size	21.5 inches
Resolution / Aspect	1920 x 1080px / 16:9
Inputs	Ethernet / WiFi
Audio	Optional Audio Output
Touch	Resistive 5 Wires / Projected Capacitive
Power Supply	9-36V DC / 43-160VDC / 14-160VDC
Power Consumption	20W (250-450 nits) / 35W (1000 nits)
MTBF / Lifespan	Controller and LCD: 100.000h Backlight: min. 50.000h
Warranty	24 months
Certification	CE
Mounting Type	Open frame, VESA75/100 optional
Mechanical and Environment	
Dimension	502 x 297 x 56.7mm (see drawing for details)
Weight	2.3Kg
Enclosure	Steel and Aluminum, Powder Paint
Operation Temp.	-20°C to 60°C
Storage Temp.	-30°C to 80°C
Vibrations / Shock	1G 2-500Hz / 10G 11ms
Optical Specification	
Brightness	350/1000 nits, LED backlight.
Dimmer	Fully configurable Dimmer with Internal Sensor (included) and External Sensor (optional)
Contrast ratio	1000:1
Viewing Angle	178° H, 178° V
Response Time	16 ms
Optical Finish	Anti-glare/Anti-reflective
Enhancements	Sunlight Readable and Transfletive Enhancements Available

Inelmatic Electronics Service Centers
 Europe: Valladolid (Spain)
 Asia: Shanghai (China),
 Americas: Florida (USA), Ontario (Canada),
 Australia: Perth & Melbourne (Australia)

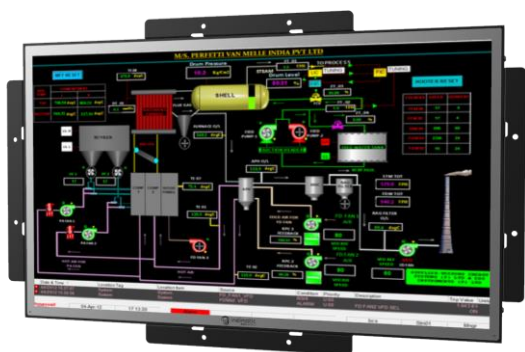
CPU Specification	
Cores	Quad-core ARM Cortex-A17
Frequency	1.8GHz
DDR	Upto 4G DDR4
Graphics	Mali-T760 MP4 GPU
Storage	Internal 8 to 16G eMMC , external TF/SD
Watchdog	Configurable watchdog
I/O	
Ethernet	1 x Base10/100, optional Gigabit, M12 Connector D Coded
USB	USB 2.0 x 1 M12 connector, USB 2.0 x 1 Type A
Ignition	Integrated digital input for IGN control
Digital I/O	8 Input or 4 in 4 Out optional
Video	Optional DVI / HDMI Output
Audio	Optional Line In / Line Out

Drawing



Inelmatic Electronics Service Centers
 Europe: Valladolid (Spain)
 Asia: Shanghai (China),
 Americas: Florida (USA), Ontario (Canada),
 Australia: Perth & Melbourne (Australia)

Images



Ordering Information

Model	Resolution	RAM/Flash	Brightness	Power Supply.	Angle	Operation Temp.
EDF2150-3388-208-2ND0-9	1920x1080px	2G / 8G	350nits	43-160VDC	178H/178V	-20°C to 60°C
EDF2150SHB-3388-208-2ND0-9	1920x1080px	2G / 8G	1000nits	43-160VDC	178H/178V	-20°C to 60°C

Accessories

EDF001-L	Fixing accessory (L shape) for rear panel mounting

Inelmatic Electronics Service Centers
 Europe: Valladolid (Spain)
 Asia: Shanghai (China),
 Americas: Florida (USA), Ontario (Canada),
 Australia: Perth & Melbourne (Australia)